

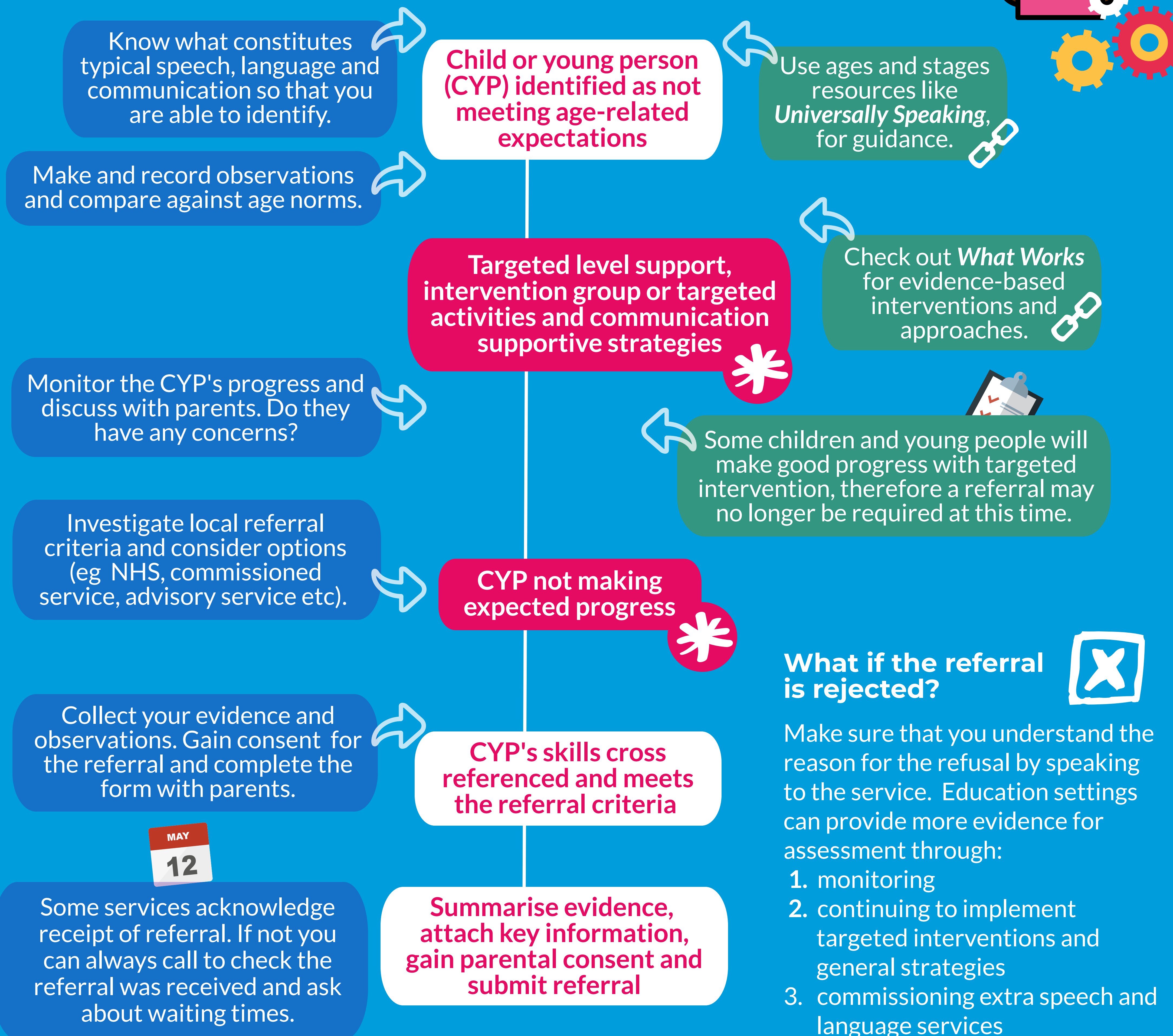
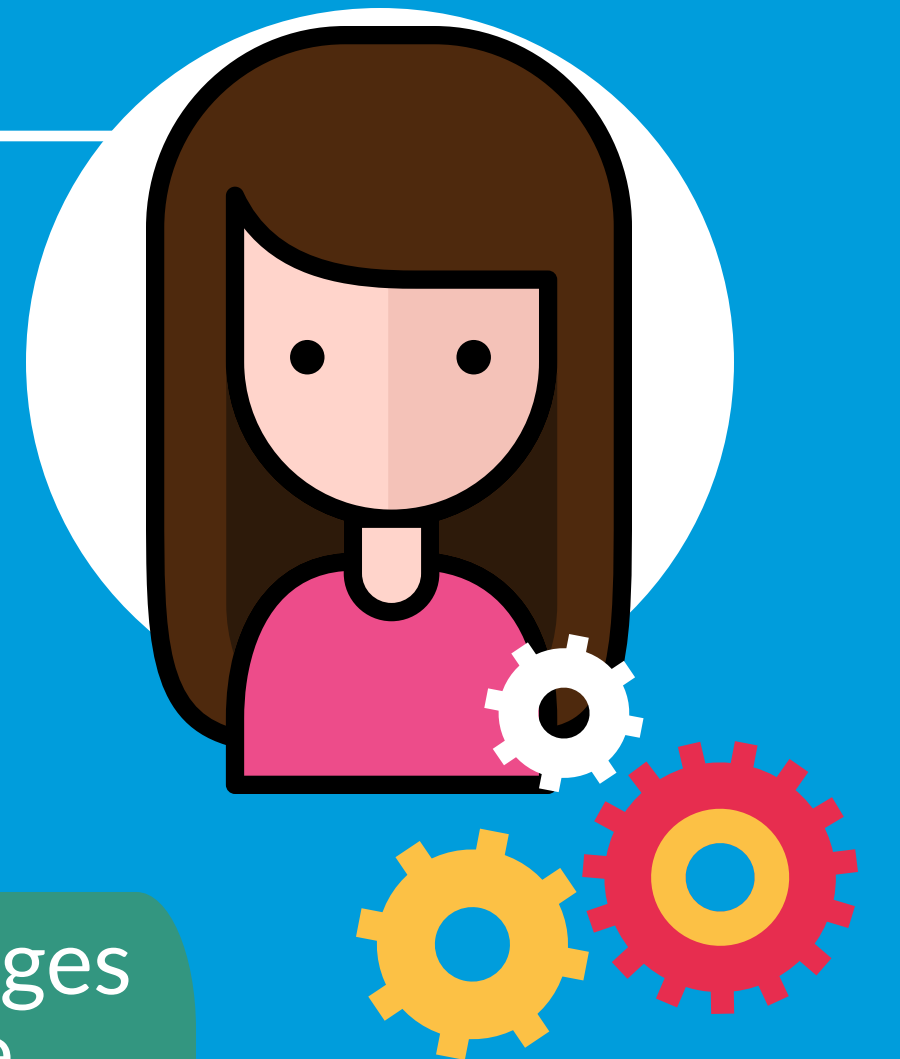
Making effective referrals

ICAN

helps children communicate

The referral decision-making process

For speech and language services, information provided by referrers is invaluable. Using a systematic approach to decision making can make it easier to refer at the right time, with the right information.



* These are important stages for referrers *with ongoing contact* with the child or young person (such as education settings). Referrals are more likely to be accepted if you have evidence that your targeted intervention did not have the desired impact.

* It may not be possible for referrers *without ongoing contact* with the child or young person (such as health visitors or GPs) to put targeted level support in place. In these cases a referral will have to be made straight away.